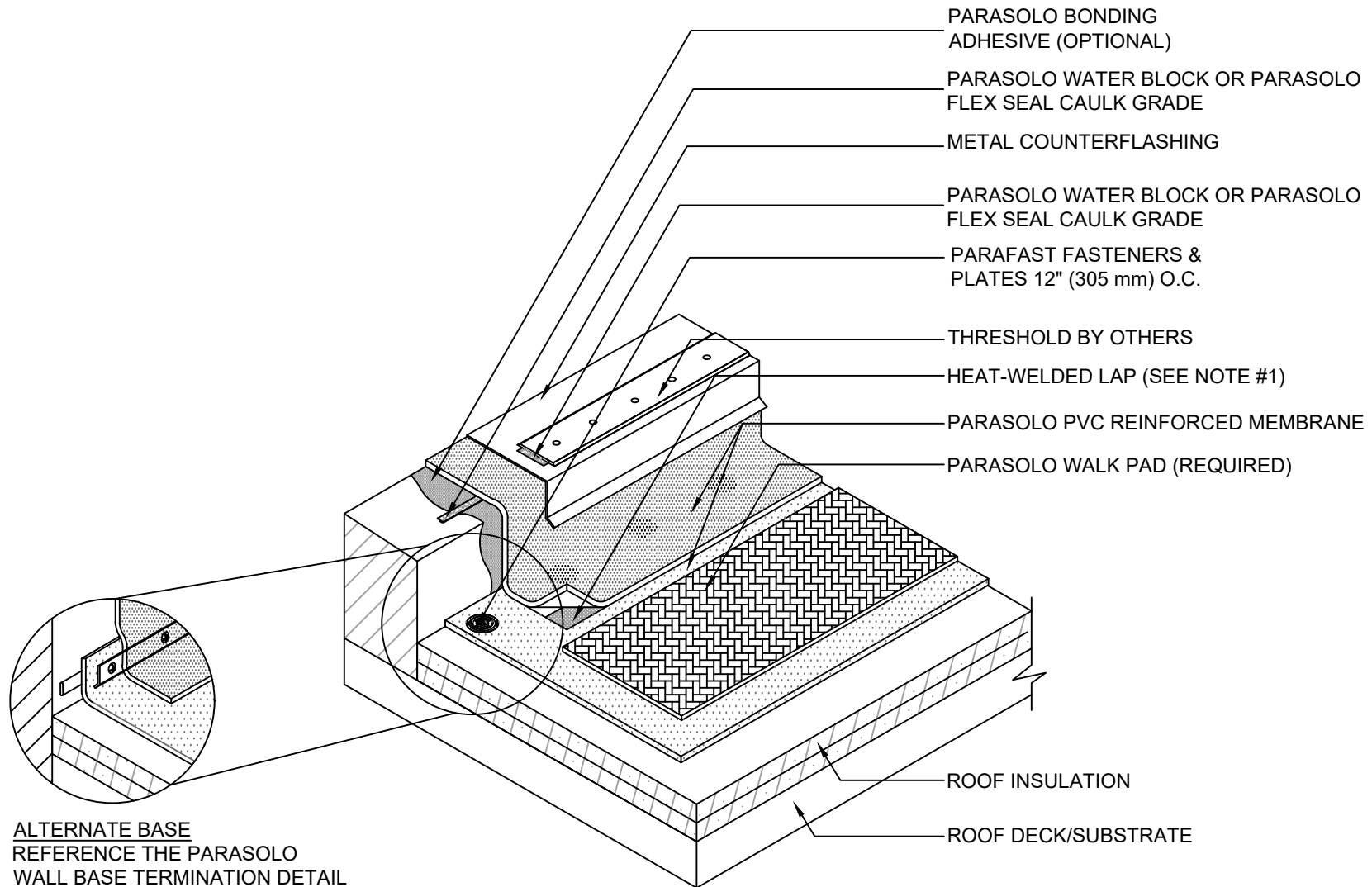


DOOR THRESHOLD FLASHING DETAIL

PARASOLO PVC ROOF MEMBRANE - RIGID INSULATION (ALL SYSTEMS)



NOTES:

1. FOR HEAT-WELDING LAPS USE 1.5" MIN. WELD WITH AUTOMATIC MACHINE WELDER AND 2" MIN. WELD WITH HAND WELDER.
2. FOR HEIGHTS LESS THAN 8" (203 MM) CONTACT SIPLAST FOR MORE INFORMATION.

N.T.S