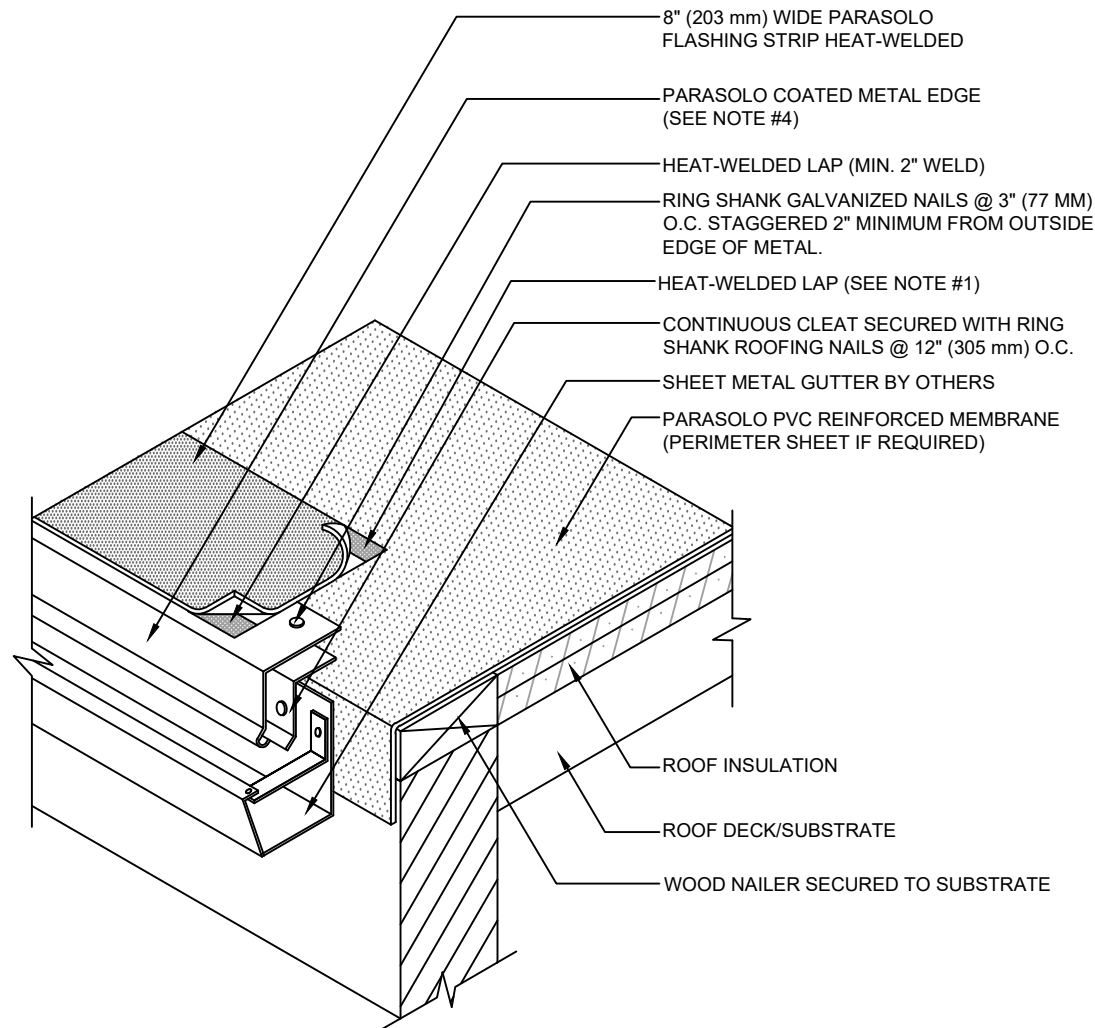


GUTTER WITH COATED METAL EDGE

PARASOLO PVC ROOF MEMBRANE - RIGID INSULATION (ALL SYSTEMS)



NOTES:

1. FOR HEAT-WELDING LAPS USE 1.5" MIN. WELD WITH AUTOMATIC MACHINE WELDER AND 2" MIN. WELD WITH HAND WELDER.
2. REFER TO PARASOLO DETAIL 204 FOR COATED METAL JOINTS.
3. THE CARPENTRY AND METAL WORK SHOWN DEPICTS SHOP FABRICATION AND JOB-SITE ASSEMBLY. THESE COMPONENTS SHOULD BE DESIGNED/FABRICATED/INSTALLED ACCORDING TO GENERALLY ACCEPTED INDUSTRY PRACTICES, STANDARDS, AND APPROVALS.
4. CONTACT THE SIPLAST TECHNICAL DEPARTMENT FOR INFORMATION REGARDING THE APPROPRIATE PROFILES AND GAUGES FOR CLEAT AND PARASOLO METAL.

N.T.S