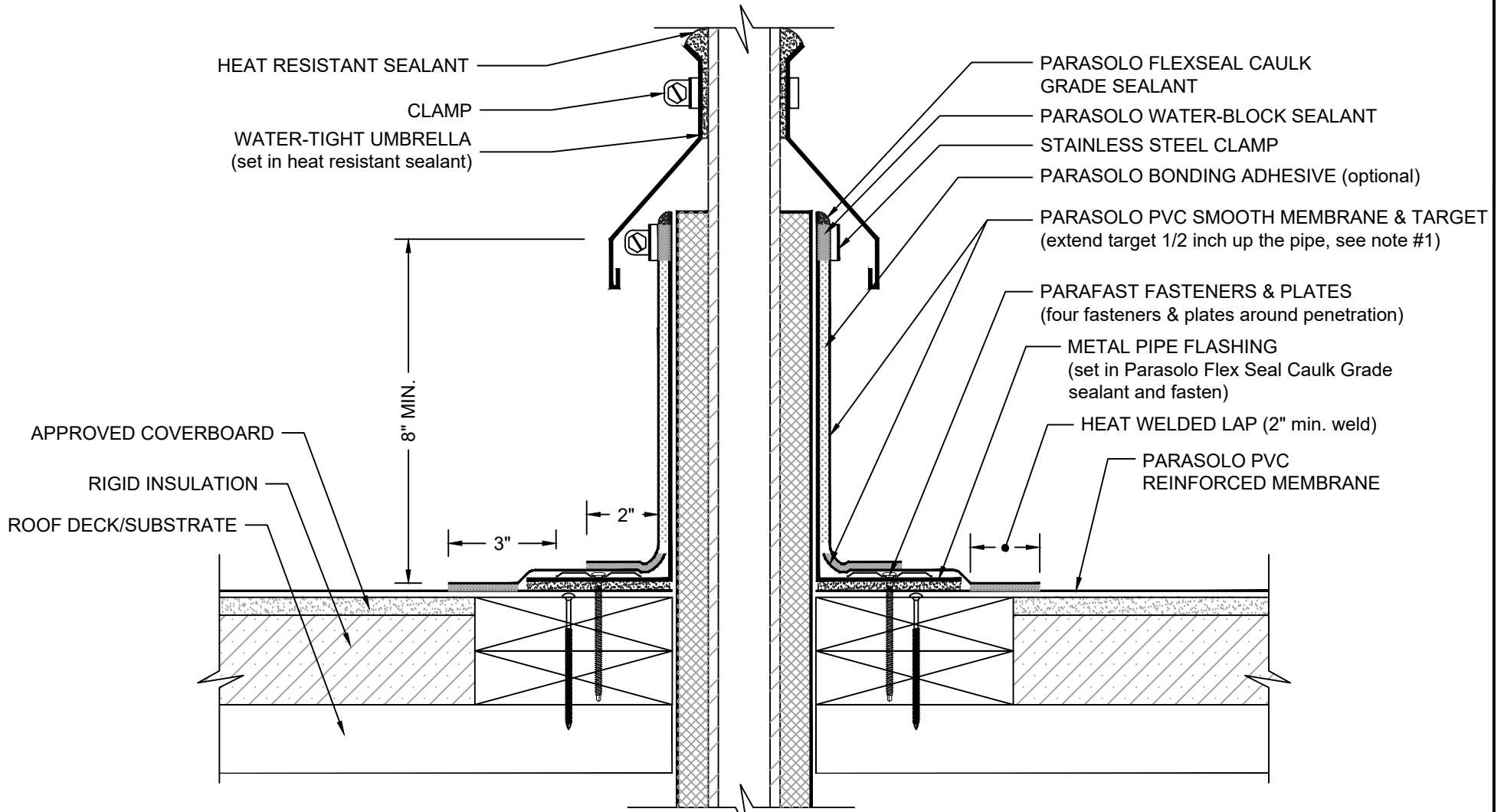


HIGH TEMPERATURE STACK W/INSULATED THIMBLE PARASOLO PVC ROOF MEMBRANE - RIGID INSULATION (ALL SYSTEMS)



NOTES:

1. APPLY HEAT TO UNREINFORCED MEMBRANE AND FORM BY HAND PRIOR TO HOT AIR WELDING.
2. THE CARPENTRY AND METAL WORK SHOWN DEPICT SHOP FABRICATION AND JOB-SITE ASSEMBLY. THESE COMPONENTS SHOULD BE DESIGNED/FABRICATED/INSTALLED ACCORDING TO GENERALLY ACCEPTED INDUSTRY PRACTICES, STANDARDS, AND APPROVALS.
3. DISSIMILAR METAL TYPES SUBJECT TO ELECTROLYTIC REACTION SHOULD BE PHYSICALLY SEPARATED.
4. REQUIREMENTS AND RECOMMENDATIONS DETAILED IN CURRENT SIPLAST SPECIFICATIONS SHALL APPLY IN ADDITION TO THE ABOVE DRAWING.

N.T.S