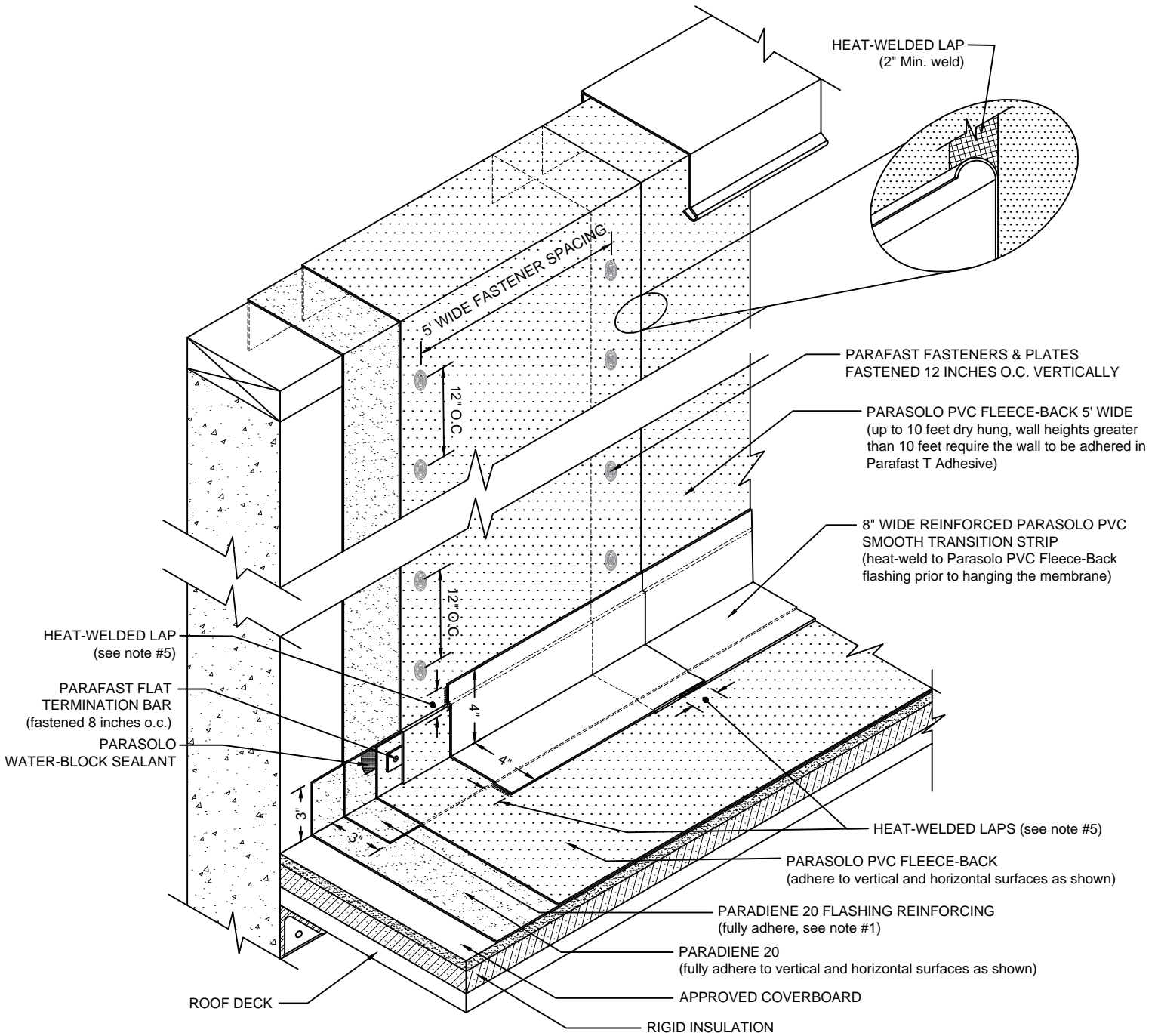


# HIGH WALL FLASHING DETAIL 5' WIDE SHEETS

## PARASOLO HYBRID SYSTEM - RIGID INSULATION



**NOTES:**

1. PARADIENE 20 FLASHING REINFORCING IS REQUIRED FOR EXPOSED PARADIENE IN LONG-TERM PHASE-CONSTRUCTION OR FOR SPECIAL GUARANTEE REQUIREMENTS. THE PARADIENE 20 IS OPTIONAL IN STANDARD NON-PHASE CONSTRUCTION APPLICATIONS.
2. WHERE PRIMER IS INDICATED TO MAINTAIN PROPER ADHESION, TA-119 PRIMER IS REQUIRED FOR ALL PARADIENE 20 SA FLASHING REINFORCING AND STRIPPING PLY APPLICATIONS. USE PA-1125 OR PA-917 LS PRIMER FOR ALL OTHER PARADIENE 20 SERIES PRODUCTS THAT ARE NOT SELF-ADHESIVE SHEETS. CONTACT SIPLAST FOR SPECIFIC REQUIREMENTS.
3. THE METAL WORK SHOWN DEPICTS SHOP FABRICATION AND JOB-SITE ASSEMBLY. THESE COMPONENTS SHOULD BE DESIGNED/FABRICATED/INSTALLED ACCORDING TO GENERALLY ACCEPTED INDUSTRY PRACTICES, STANDARDS, AND APPROVALS.
4. DISSIMILAR METAL TYPES SUBJECT TO ELECTROLYTIC REACTION SHOULD BE PHYSICALLY SEPARATED.
5. FOR HEAT-WELDING LAPS USE 1.5" MIN. WELD WITH AUTOMATIC MACHINE WELDER AND 2" MIN. WELD WITH HAND WELDER.
6. REQUIREMENTS AND RECOMMENDATIONS DETAILED IN CURRENT SIPLAST SPECIFICATIONS SHALL APPLY IN ADDITION TO THE ABOVE DRAWING.

CAUTION: SIPLAST RECOMMENDS THAT ALL PRACTICES PERTAINING TO NRCA CERTA GUIDELINES BE FOLLOWED WHEN TORCHING METHODS ARE EMPLOYED. THIS INCLUDES PERFORMING A FIRE WATCH FOLLOWING ANY TORCH APPLICATIONS. ALWAYS HAVE APPROVED FIRE-EXTINGUISHING EQUIPMENT NEARBY.

**N.T.S**



1000 Rochelle Boulevard - Irving, Texas - 75062  
(800) 922-8800 www.siplast.com

Ref: High Wall Flashing 5F Sheets - Parasolo-P20 - Rigid

Rev: 02.20.20