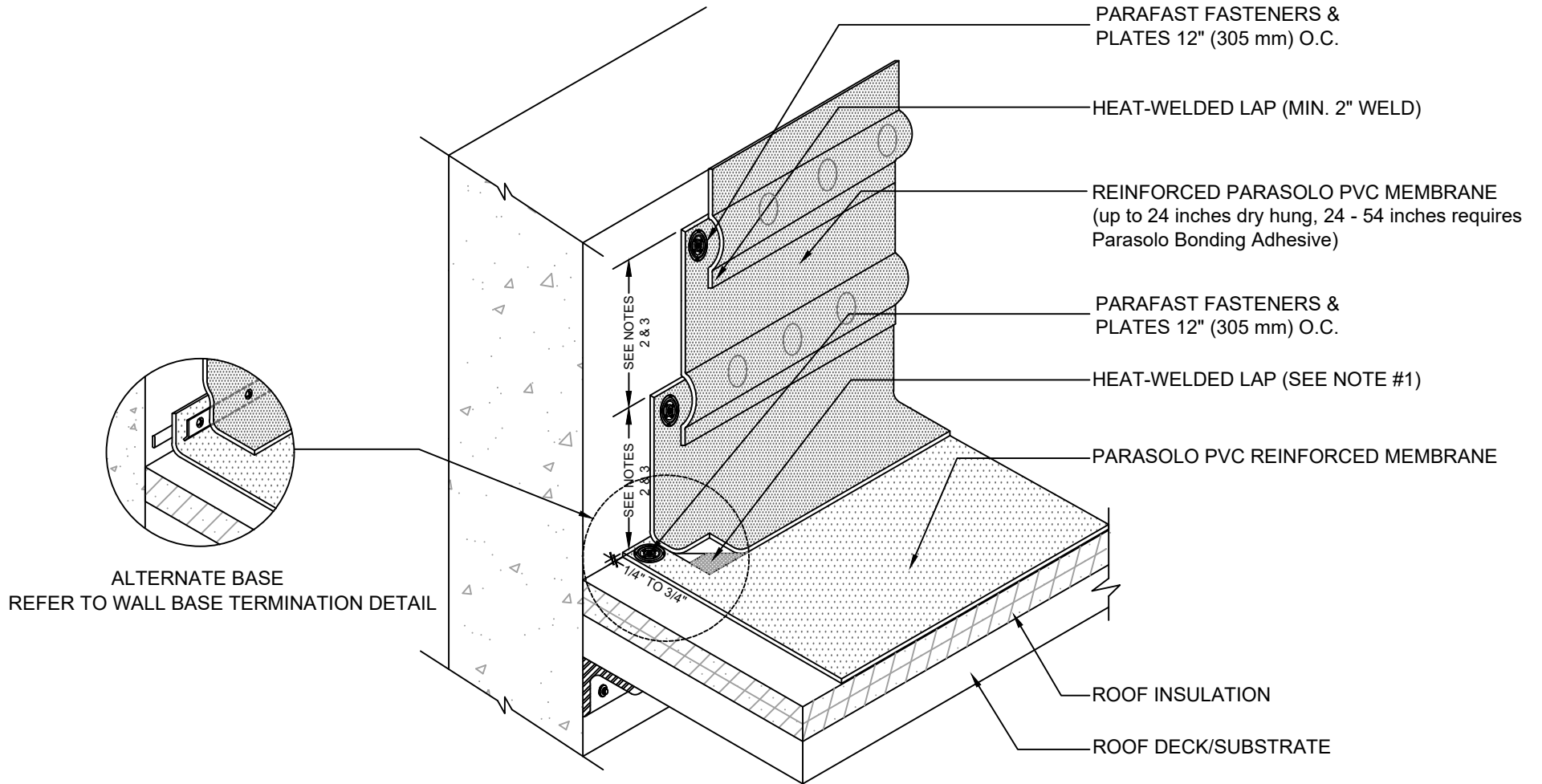


HIGH WALL FLASHING DETAIL WITH PLATES AND FASTENERS

PARASOLO PVC ROOF MEMBRANE - RIGID INSULATION (ALL SYSTEMS)



NOTES:

1. FOR HEAT-WELDING LAPS USE 1.5" MIN. WELD WITH AUTOMATIC MACHINE WELDER AND 2" MIN. WELD WITH HAND WELDER.
2. 24" (610 MM) MAX. DIMENSION FOR LOOSE-APPLIED FLASHINGS.
3. 54" (1.37 M) MAX. DIMENSION FOR FULLY ADHERED FLASHINGS.

N.T.S