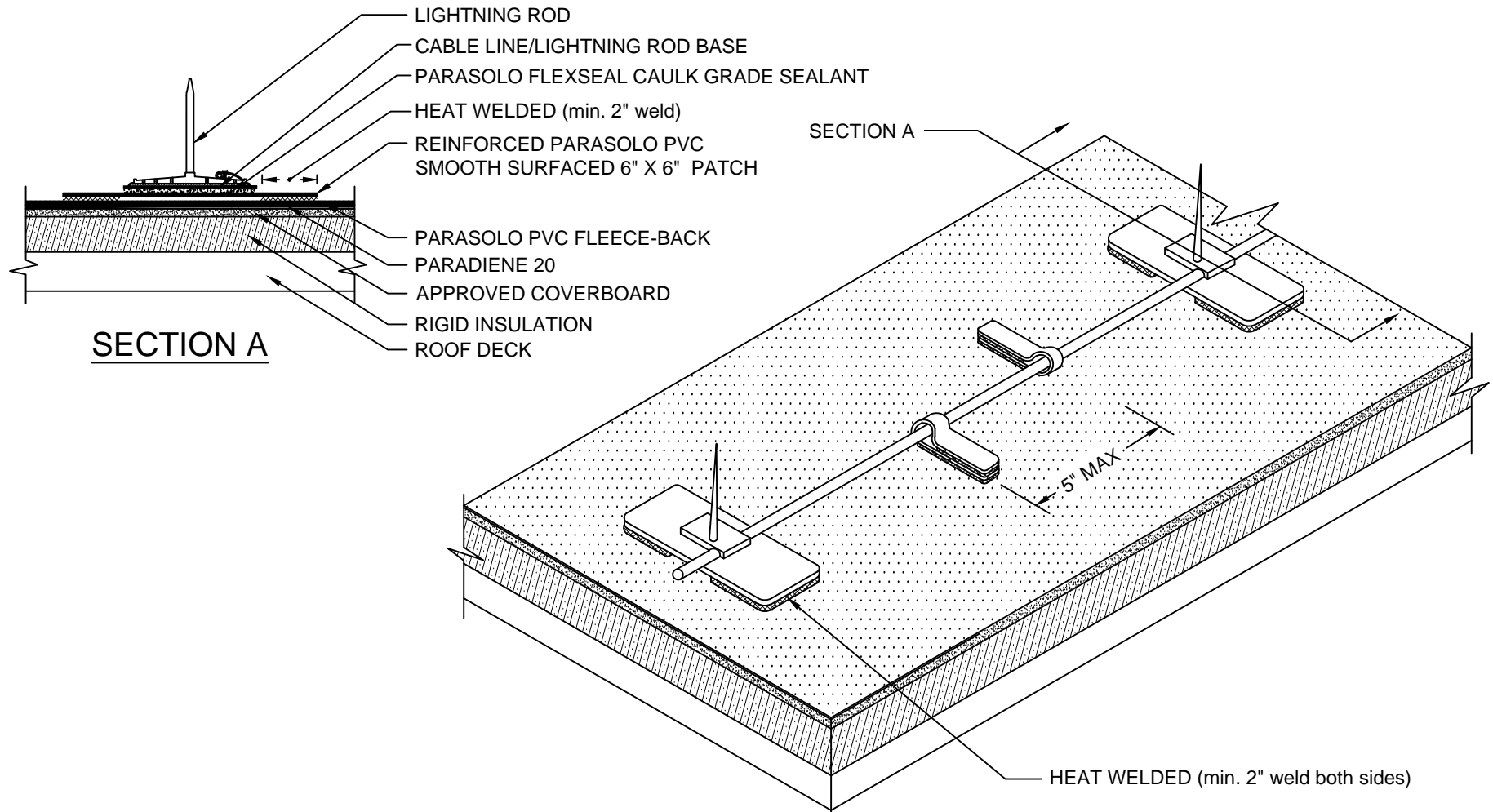


# LIGHTNING PROTECTION TERMINAL - ROOF MOUNT DETAIL

## PARASOLO HYBRID SYSTEM - RIGID INSULATION



**NOTES:**

1. DAMAGE TO PARASOLO MEMBRANE IS EXCLUDED FROM GURANTEE COVERAGE.
2. THE PARASOLO PATCHES SHOULD BE INSTALLED BY A SIPLAST SELECT CONTRACTOR.
3. THE INSTALLATION OF THE LIGHTNING PROTECTION SYSTEM SHOULD FOLLOW THE SPECIFICATIONS OF THE LIGHTNING PROTECTION SYSTEM MANUFACTURER.
4. REQUIREMENTS AND RECOMMENDATIONS DETAILED IN CURRENT SIPLAST SPECIFICATIONS SHALL APPLY IN ADDITION TO THE ABOVE DRAWING.

CAUTION: SIPLAST RECOMMENDS THAT ALL PRACTICES PERTAINING TO NRCA CERTA GUIDELINES BE FOLLOWED WHEN TORCHING METHODS ARE EMPLOYED. THIS INCLUDES PERFORMING A FIRE WATCH FOLLOWING ANY TORCH APPLICATIONS. ALWAYS HAVE APPROVED FIRE-EXTINGUISHING EQUIPMENT NEARBY.

N.T.S