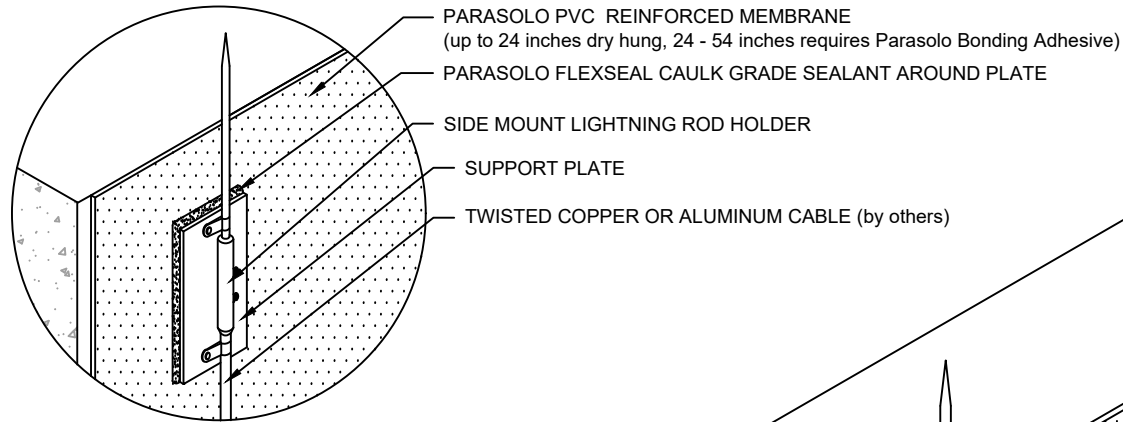


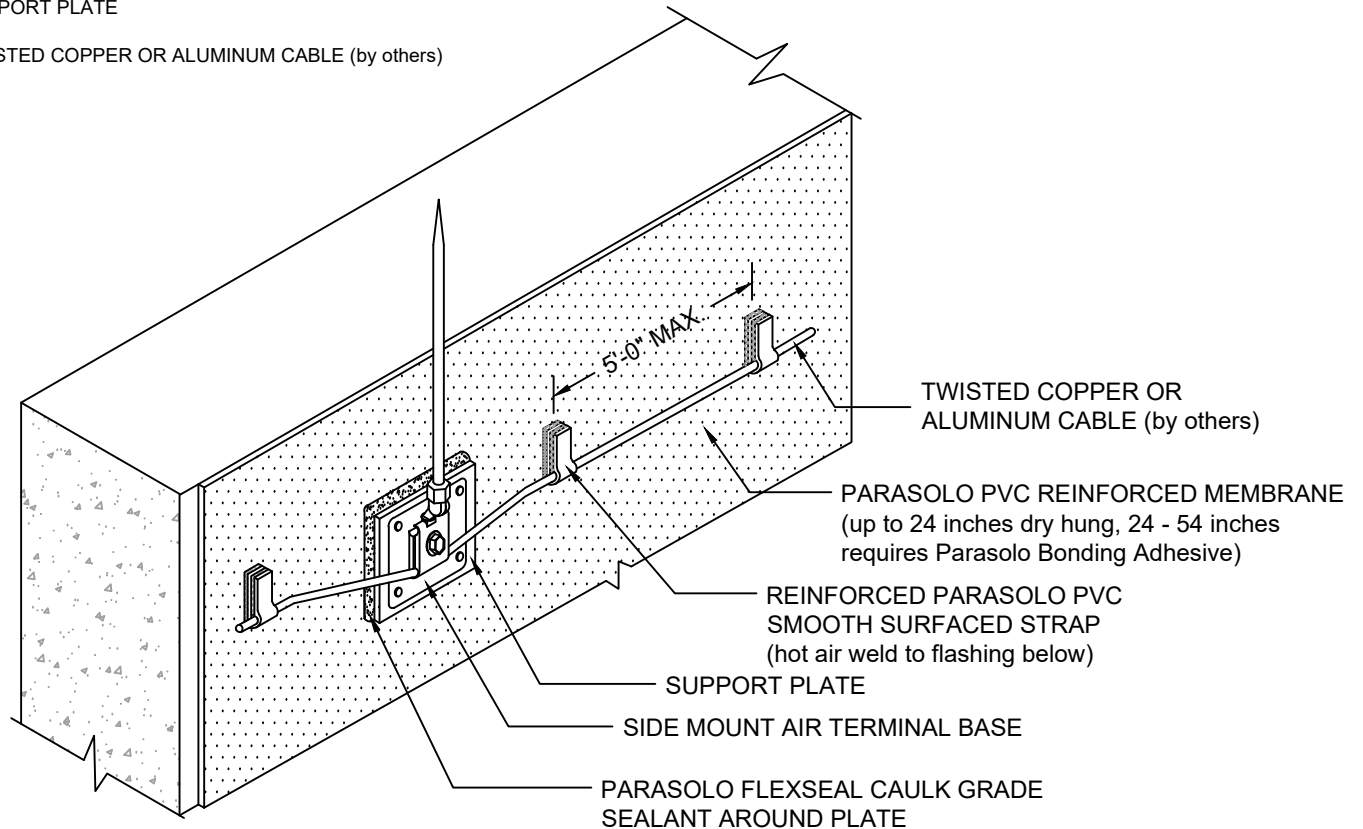
# LIGHTNING PROTECTION TERMINAL - WALL MOUNT DETAIL

## PARASOLO PVC ROOF MEMBRANE - RIGID INSULATION (ALL SYSTEMS)



- PARASOLO PVC REINFORCED MEMBRANE  
(up to 24 inches dry hung, 24 - 54 inches requires ParasoLo Bonding Adhesive)
- PARASOLO FLEXSEAL CAULK GRADE SEALANT AROUND PLATE
- SIDE MOUNT LIGHTNING ROD HOLDER
- SUPPORT PLATE
- TWISTED COPPER OR ALUMINUM CABLE (by others)

### ALTERNATE ROD WALL MOUNT



- TWISTED COPPER OR ALUMINUM CABLE (by others)
- PARASOLO PVC REINFORCED MEMBRANE  
(up to 24 inches dry hung, 24 - 54 inches requires ParasoLo Bonding Adhesive)
- REINFORCED PARASOLO PVC SMOOTH SURFACED STRAP  
(hot air weld to flashing below)
- SUPPORT PLATE
- SIDE MOUNT AIR TERMINAL BASE
- PARASOLO FLEXSEAL CAULK GRADE SEALANT AROUND PLATE

#### NOTES:

1. DAMAGE TO PARASOLO MEMBRANE IS EXCLUDED FROM GURANTEE COVERAGE.
2. THE PARASOLO PATCHES SHOULD BE INSTALLED BY A SIPLAST SELECT CONTRACTOR.
3. THE INSTALLATION OF THE LIGHTNING PROTECTION SYSTEM SHOULD FOLLOW THE SPECIFICATIONS OF THE LIGHTNING PROTECTION SYSTEM MANUFACTURER.
4. REQUIREMENTS AND RECOMMENDATIONS DETAILED IN CURRENT SIPLAST SPECIFICATIONS SHALL APPLY IN ADDITION TO THE ABOVE DRAWING.

N.T.S