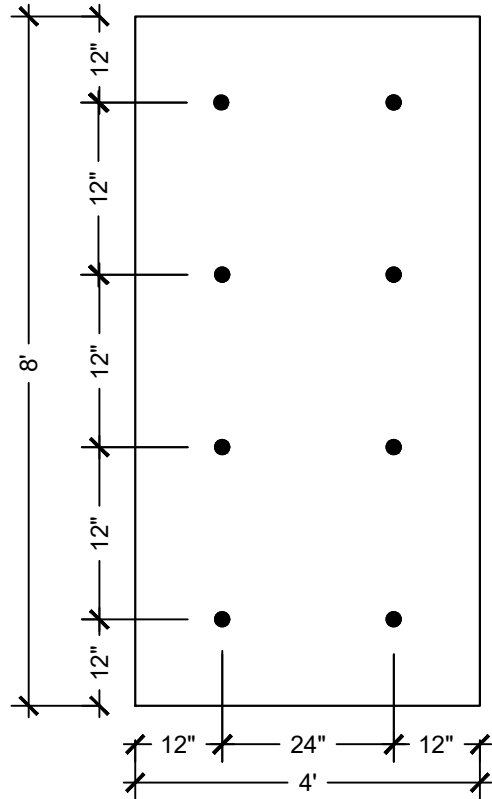


PARAFAST RHINO BOND STANDARD FASTENING PATTERN

PARASOLO PVC ROOF MEMBRANE - RIGID INSULATION (HEAT INDUCTION SYSTEMS)

APPROVED STEEL AND CONCRETE DECKS 1-120

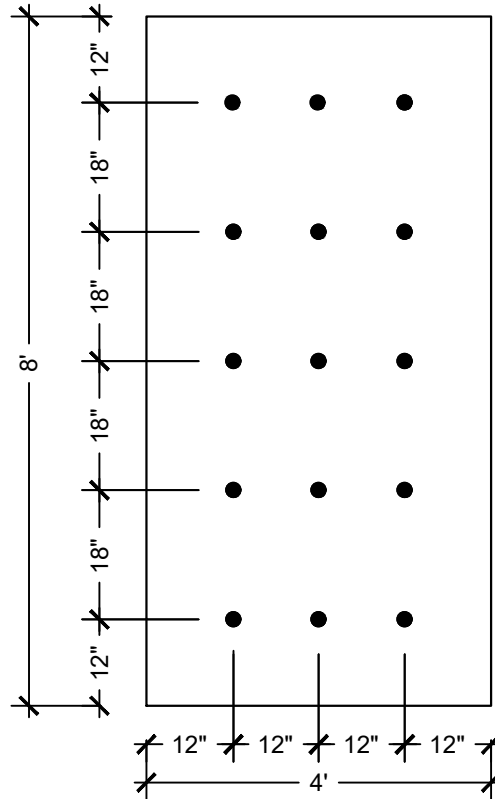
*FIELD AREA



8 FASTENERS PER BOARD

(1 FASTENER PER 4 sq ft)

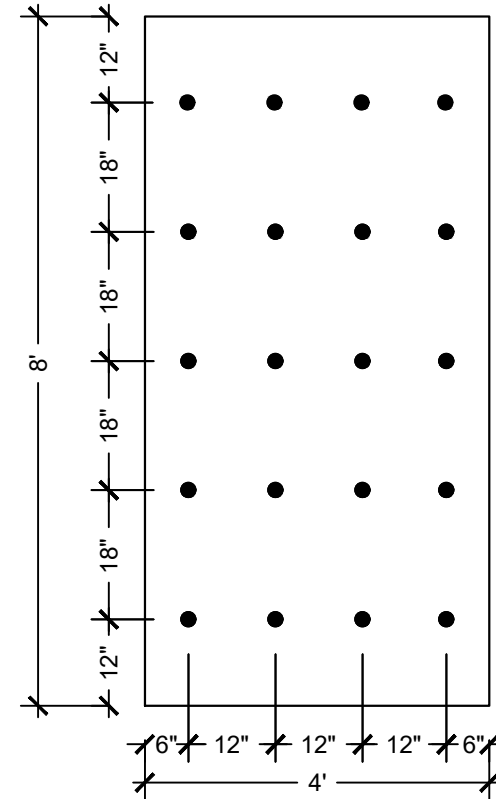
PERIMETER AREA



15 FASTENERS PER BOARD

(1 FASTENER PER 2.13 sq ft)

CORNER AREA



20 FASTENERS PER BOARD

(1 FASTENER PER 1.2 sq ft)

NOTES:

1. REFERENCE SPECIFIC SYSTEM/INSULATION TYPE AND THICKNESS REQUIREMENTS.
2. PARAFAST RHINO BOND PLATE-WELDED SYSTEM IS NOT ACCEPTABLE FOR GYPSUM, CEMENTITIOUS WOOD FIBER OR OSB.
3. REFER TO THE PARAFAST RHINO BOND APPLICATION AND SPECIFICATIONS FOR FASTENER AND DECK REQUIREMENTS.
4. CONTACT SIPLAST FOR RECOMMENDED FASTENING FREQUENCIES TO MEET SPECIFIC TESTING, CODE AGENCY, OR GUARANTEE REQUIREMENTS.

*THE FIELD OF ROOF ATTACHMENTS ABOVE EQUATE TO FM 1-120 RATINGS

N.T.S