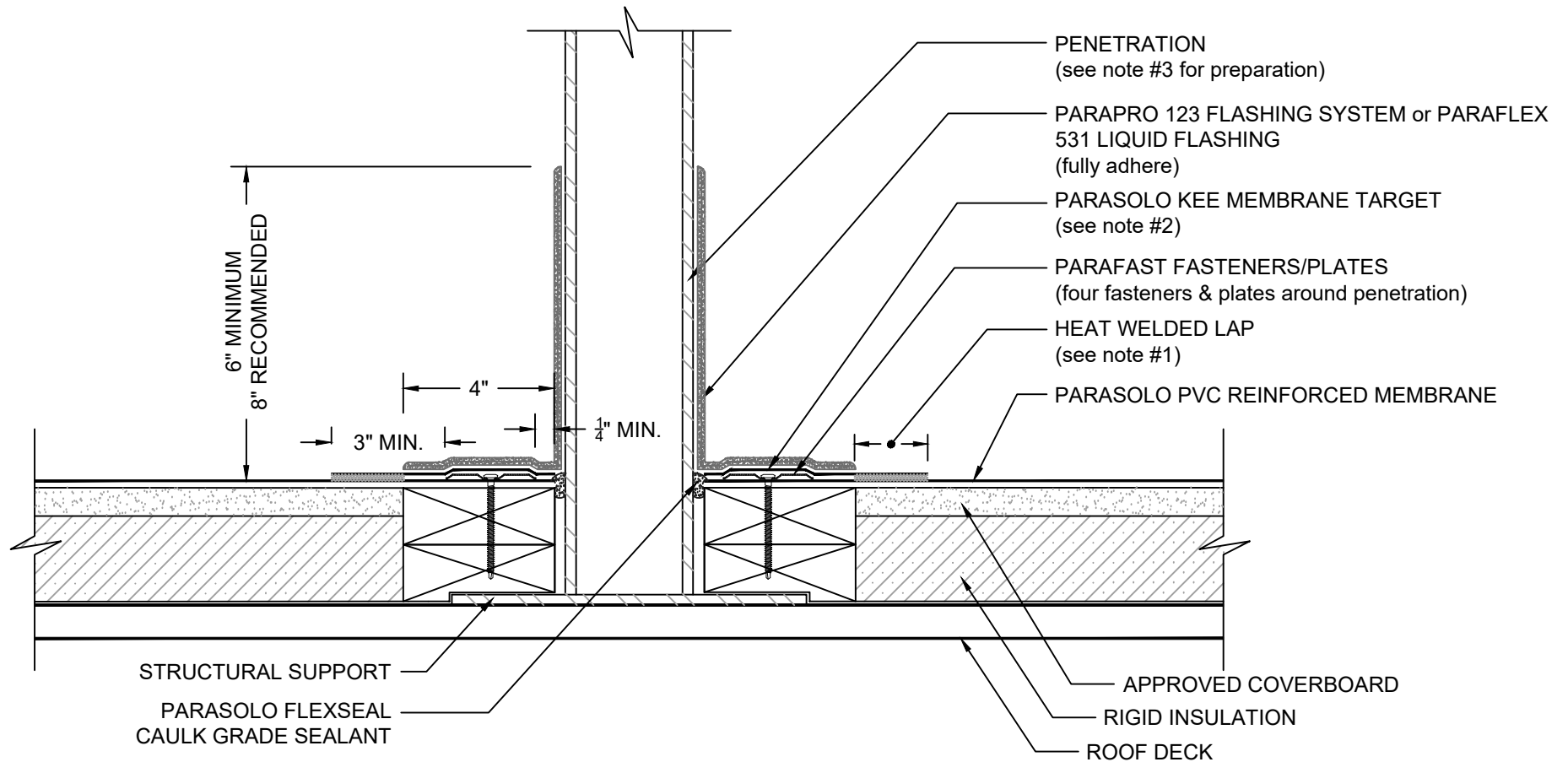


# PENETRATION with PARAPRO/PARAFLEX 531 LIQUID FLASHING

## PARASOLO PVC ROOF MEMBRANE - RIGID INSULATION (ALL SYSTEMS)



**NOTES:**

1. FOR HEAT-WELDING LAPS USE 1.5" MIN. WELD WITH AUTOMATIC MACHINE WELDER AND 2" MIN. WELD WITH HAND WELDER.
2. PARASOLO KEE MEMBRANE IS REQUIRED AT LOCATIONS TO RECEIVE PARAPRO & PARAFLEX 531 LIQUID FLASHING SYSTEMS.
3. REFER TO SIPLAST PREPARATION GUIDELINES FOR PROPER SURFACE TREATMENT OF ALL MATERIALS PRIOR TO APPLICATION OF PARAPRO OR PARAFLEX 531 LIQUID FLASHING MATERIALS.
4. THE CARPENTRY AND METAL WORK SHOWN DEPICT SHOP FABRICATION AND JOB-SITE ASSEMBLY. THESE COMPONENTS SHOULD BE DESIGNED/FABRICATED/INSTALLED ACCORDING TO GENERALLY ACCEPTED INDUSTRY PRACTICES, STANDARDS, AND APPROVALS.
5. PENETRATIONS TO RECEIVE THE PARAPRO 123 FLASHING SYSTEM OR PARAFLEX 531 LIQUID FLASHING MUST BE SECURED TO THE STRUCTURE TO PREVENT MOVEMENT.
6. REQUIREMENTS AND RECOMMENDATIONS DETAILED IN CURRENT SIPLAST SPECIFICATIONS SHALL APPLY IN ADDITION TO THE ABOVE DRAWING.

N.T.S