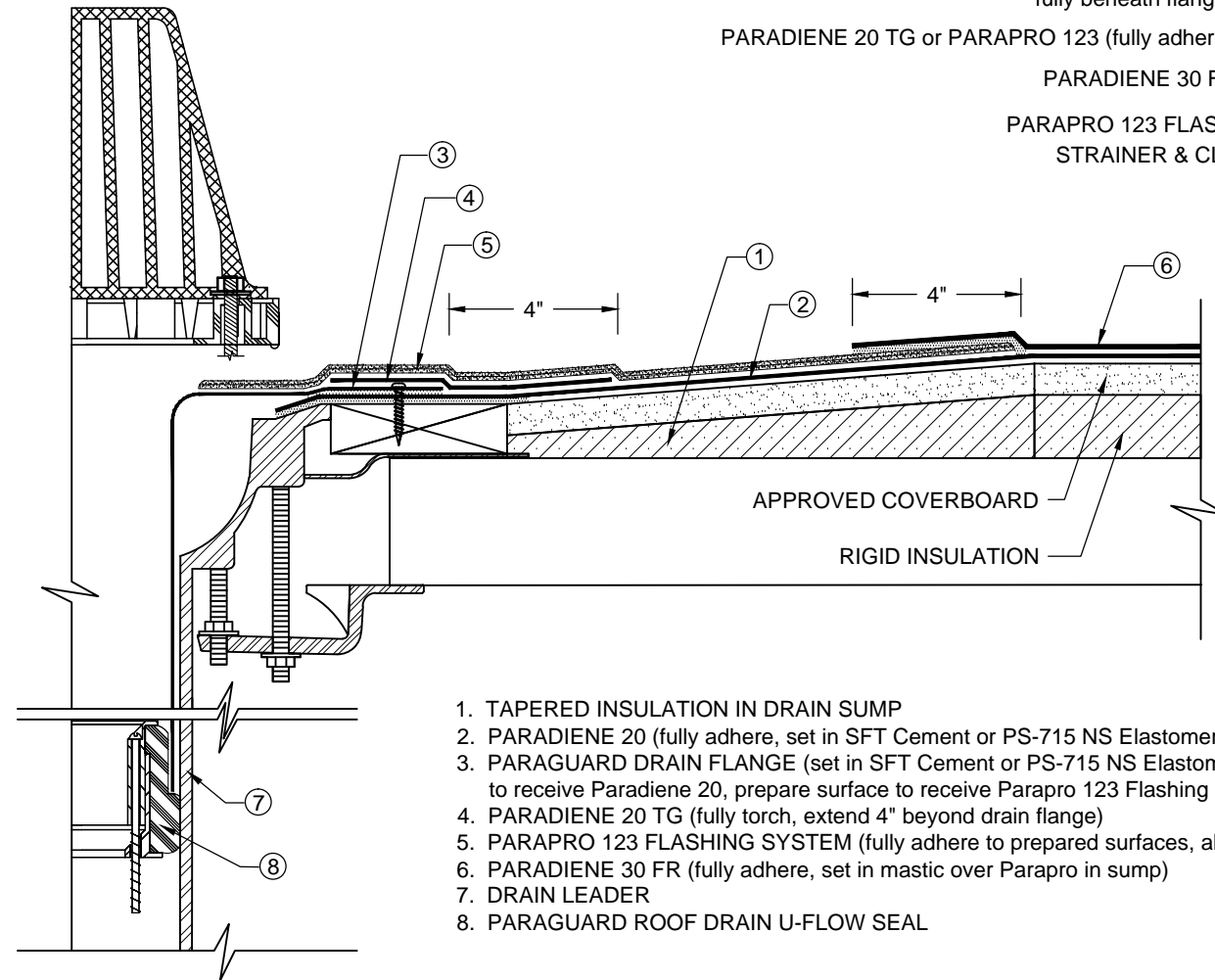
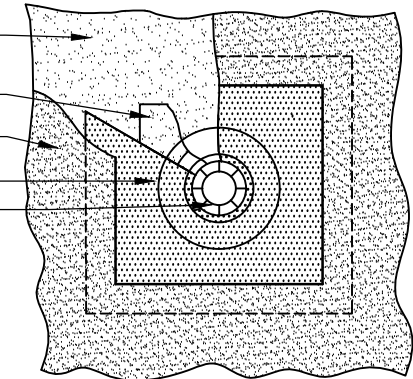


# PARAGUARD ROOF DRAIN with PARPARO FLASHING

## PARADIENE 20/30 FR - RIGID INSULATION



OVERHEAD VIEW



PARADIENE 20 (fully adhere - extend fully beneath flange, See note # 4)

PARADIENE 20 TG or PARAPRO 123 (fully adhere, See note # 4)

PARADIENE 30 FR (fully adhere)

PARAPRO 123 FLASHING SYSTEM  
STRAINER & CLAMPING RING

1. TAPERED INSULATION IN DRAIN SUMP
2. PARADIENE 20 (fully adhere, set in SFT Cement or PS-715 NS Elastomeric Sealant 6" around drain opening)
3. PARAGUARD DRAIN FLANGE (set in SFT Cement or PS-715 NS Elastomeric Sealant, fasten flange to substrate, prime area to receive Paradiene 20, prepare surface to receive Parapro 123 Flashing System)
4. PARADIENE 20 TG (fully torch, extend 4" beyond drain flange)
5. PARAPRO 123 FLASHING SYSTEM (fully adhere to prepared surfaces, allow to cure prior to application of Paradiene 30 FR)
6. PARADIENE 30 FR (fully adhere, set in mastic over Parapro in sump)
7. DRAIN LEADER
8. PARAGUARD ROOF DRAIN U-FLOW SEAL

NOTES:

1. WHERE PRIMER IS INDICATED TO MAINTAIN PROPER ADHESION, USE PA-1125 OR PA-917 LS PRIMER. CONTACT SIPLAST FOR SPECIFIC REQUIREMENTS.
2. FOLLOW SIPLAST SPECIFICATIONS FOR INSTALLATION OF PARAGUARD ROOF DRAIN COMPONENTS.
3. CLEAN/WIPE THE SURFACE OF THE CURED PARAPRO 123 FLASHING WITH PRO PREP AND ALLOW TO DRY PRIOR TO APPLICATION OF THE PARADIENE 30 FR FINISH PLY.
4. PARAPRO CANNOT BE APPLIED IN THE ABOVE CONFIGURATION OVER MEMBRANES OR OTHER MATERIALS CONTAINING UNCURED, SOLVENT-BASED MATERIALS. IN SUCH CASES, MEMBRANES TO BE COVERED WITH PARAPRO MUST BE ADHERED WITH SFT ADHESIVE, SFT CEMENT, OR PS-715 NS ELASTOMERIC SEALANT. CONTACT SIPLAST FOR TREATMENT OPTIONS OF CONDITIONS UTILIZING A BASE PLY APPLIED IN SOLVENT BASED ADHESIVE.
5. REFER TO SIPLAST FLEECE CUTTING RECOMMENDATIONS FOR CONFIGURATIONS, CUTTING, FOLDING, AND LAPPING TECHNIQUES.
6. REQUIREMENTS AND RECOMMENDATIONS DETAILED IN CURRENT SIPLAST SPECIFICATIONS AND THE PARAPRO 123 FLASHING SYSTEM INSTALLER'S GUIDE SHALL APPLY IN ADDITION TO THE ABOVE DRAWING.

CAUTION: SIPLAST RECOMMENDS THAT ALL PRACTICES PERTAINING TO NRCA CERTA GUIDELINES BE FOLLOWED WHEN TORCHING METHODS ARE EMPLOYED. THIS INCLUDES PERFORMING A FIRE WATCH FOLLOWING ANY TORCH APPLICATIONS. ALWAYS HAVE APPROVED FIRE-EXTINGUISHING EQUIPMENT NEARBY.

N.T.S

