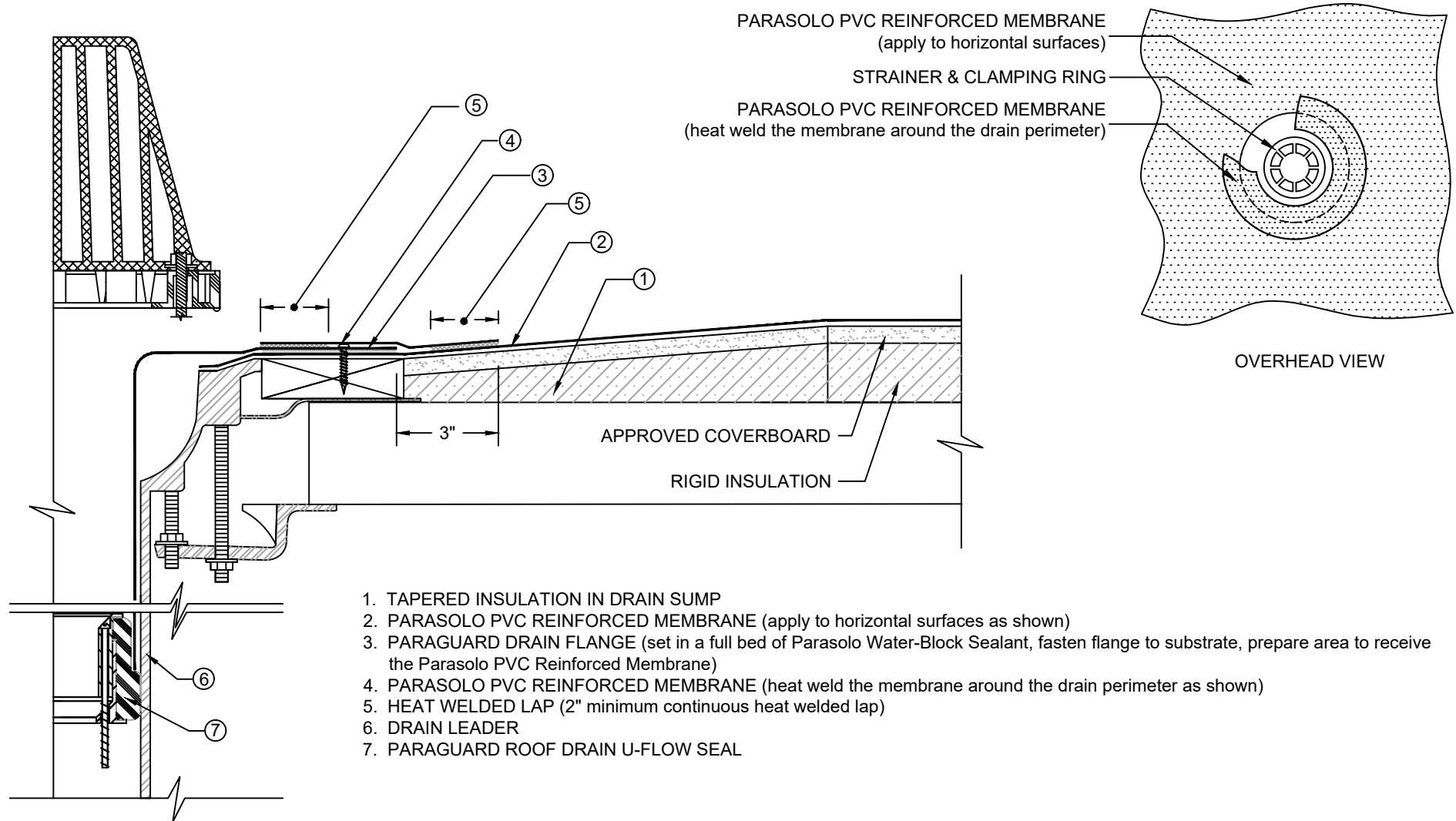


PARAGUARD PVC COATED ROOF DRAIN with PARASOLO MEMBRANE

PARASOLO PVC ROOF MEMBRANE - RIGID INSULATION (ALL SYSTEMS)



1. TAPERED INSULATION IN DRAIN SUMP
2. PARASOLO PVC REINFORCED MEMBRANE (apply to horizontal surfaces as shown)
3. PARAGUARD DRAIN FLANGE (set in a full bed of Parasolo Water-Block Sealant, fasten flange to substrate, prepare area to receive the Parasolo PVC Reinforced Membrane)
4. PARASOLO PVC REINFORCED MEMBRANE (heat weld the membrane around the drain perimeter as shown)
5. HEAT WELDED LAP (2" minimum continuous heat welded lap)
6. DRAIN LEADER
7. PARAGUARD ROOF DRAIN U-FLOW SEAL

NOTES:

1. FOLLOW SIPLAST SPECIFICATIONS FOR INSTALLATION OF PARAGUARD ROOF DRAIN COMPONENTS.
2. THE MEMBRANE MUST COVER AND EXTEND BEYOND THE FASTENER HEADS.
3. REQUIREMENTS AND RECOMMENDATIONS DETAILED IN THE CURRENT SIPLAST SPECIFICATIONS SHALL APPLY IN ADDITION TO THE ABOVE DRAWING.

N.T.S