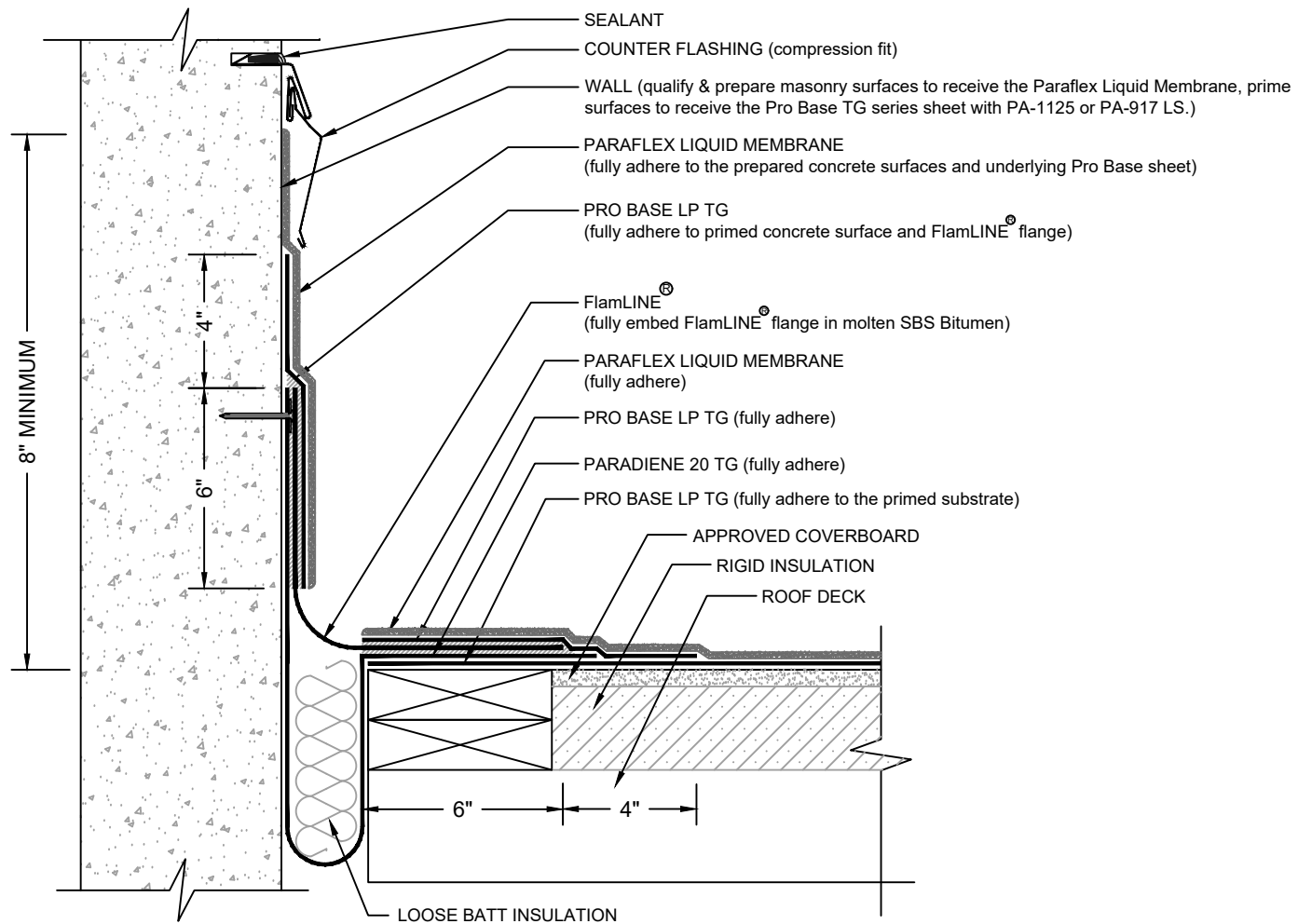


# ROOF TO WALL EXPANSION JOINT w/FlamLINE® WATERPROOF EXPANSION JOINT PARAFLEX LIQUID MEMBRANE / PRO BASE LP TG - RIGID INSULATION



- NOTES:
1. REFER TO SIPLAST PREPARATION GUIDELINES FOR PROPER SUBSTRATE TREATMENT OF ALL MATERIALS PRIOR TO APPLICATION OF PRO BASE & PARAFLEX LIQUID MATERIALS.
  2. FOLLOW SITURA SPECIFICATIONS FOR SELECTION AND INSTALLATION OF THE APPROPRIATE FLAMLINER PRODUCT.
  3. WHERE PRIMER IS INDICATED TO MAINTAIN PROPER ADHESION, TA-119 PRIMER IS REQUIRED FOR ALL PRO BASE SA SERIES FLASHING REINFORCING AND STRIPPING PLY APPLICATIONS. USE PA-1125 OR PA-917 LS PRIMER FOR ALL OTHER PRO BASE SERIES PRODUCTS THAT ARE NOT SELF-ADHESIVE SHEETS. CONTACT SIPLAST FOR SPECIFIC REQUIREMENTS.
  4. PRIME THE BLEEDOUT AT SIDE AND END LAPS OF PRO BASE PLY SHEETS USING PRO PRIMER AC TO MAINTAIN AN AESTHETIC APPEARANCE OF THE FINISHED PARAFLEX SYSTEM.
  5. THE CARPENTRY AND METAL WORK SHOWN DEPICTS SHOP FABRICATION AND JOB-SITE ASSEMBLY. THESE COMPONENTS SHOULD BE DESIGNED/FABRICATED/INSTALLED ACCORDING TO GENERALLY ACCEPTED INDUSTRY PRACTICES, STANDARDS, AND APPROVALS.
  6. REQUIREMENTS AND RECOMMENDATIONS DETAILED IN CURRENT SIPLAST AND SITURA SPECIFICATIONS SHALL APPLY IN ADDITION TO THE ABOVE DRAWING.
  7. **FlamLINE® IS A REGISTERED TRADEMARK BRAND OF SITURA INC.**

CAUTION: SIPLAST RECOMMENDS THAT ALL PRACTICES PERTAINING TO NRCA CERTA GUIDELINES BE FOLLOWED WHEN TORCHING METHODS ARE EMPLOYED. THIS INCLUDES PERFORMING A FIRE WATCH FOLLOWING ANY TORCH APPLICATIONS. ALWAYS HAVE APPROVED FIRE-EXTINGUISHING EQUIPMENT NEARBY.

N.T.S