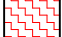



PARAGUARD COATED ROOF DRAIN W/ PARASOLO MEMBRANE

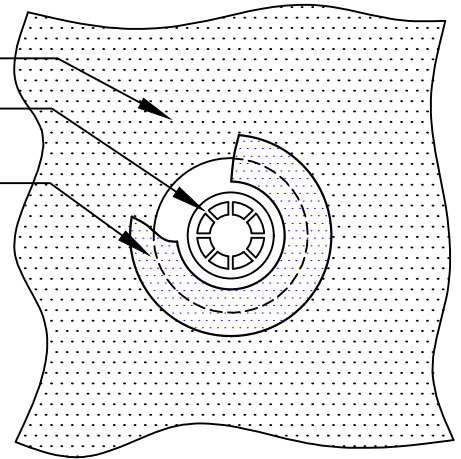
PARASOLO FLEECE BACK MEMBRANE -
INSULCEL LIGHTWEIGHT INSULATING CONCRETE

LEGEND	
	HEAT WELD
	SEALANT

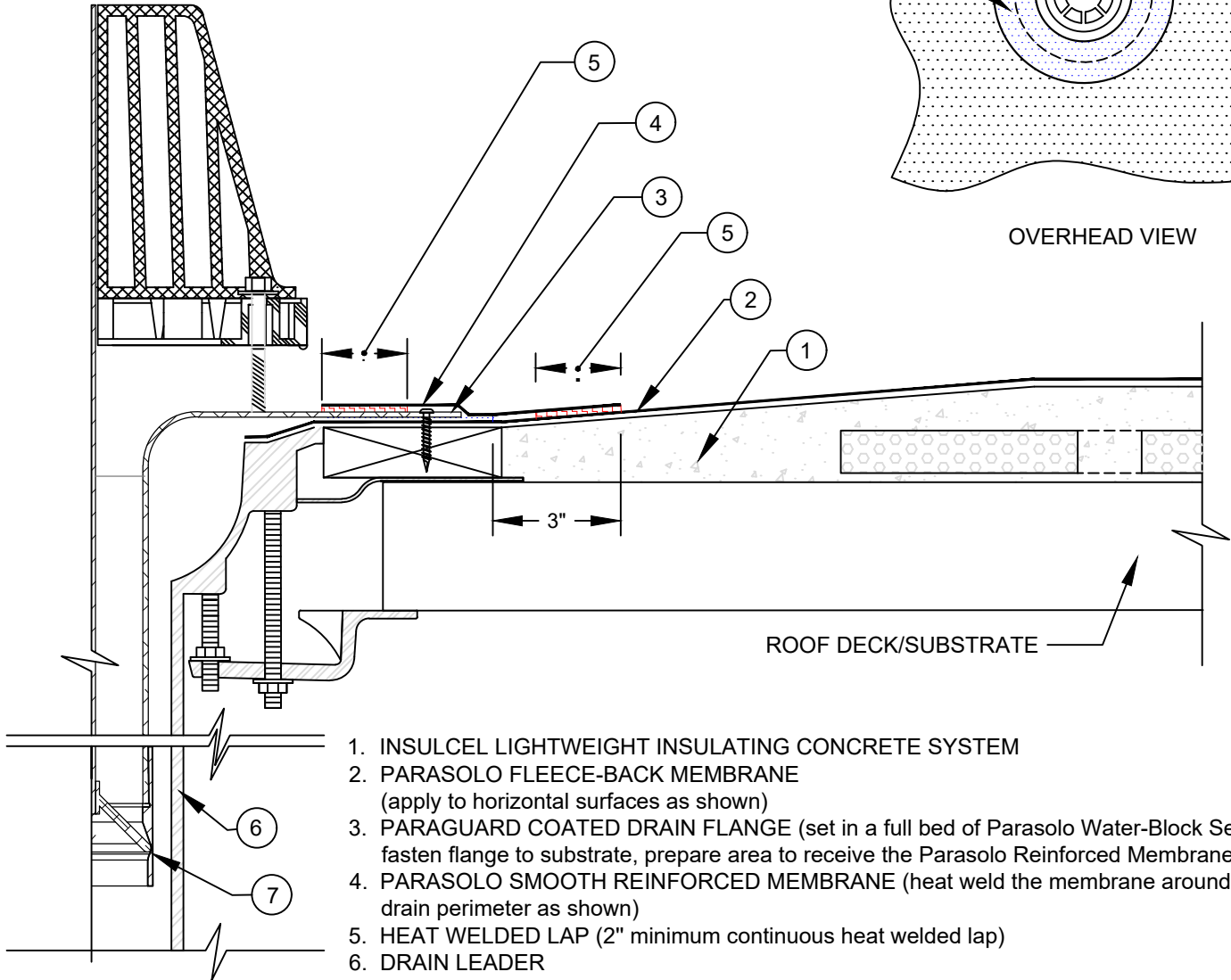
PARASOLO FLEECE-BACK MEMBRANE
(apply to horizontal surfaces)

STRAINER & CLAMPING RING

PARASOLO SMOOTH REINFORCED MEMBRANE
(heat weld the membrane around the drain perimeter)



OVERHEAD VIEW



1. INSULCEL LIGHTWEIGHT INSULATING CONCRETE SYSTEM
2. PARASOLO FLEECE-BACK MEMBRANE
(apply to horizontal surfaces as shown)
3. PARAGUARD COATED DRAIN FLANGE (set in a full bed of ParasoLo Water-Block Sealant, fasten flange to substrate, prepare area to receive the ParasoLo Reinforced Membrane)
4. PARASOLO SMOOTH REINFORCED MEMBRANE (heat weld the membrane around the drain perimeter as shown)
5. HEAT WELDED LAP (2" minimum continuous heat welded lap)
6. DRAIN LEADER
7. U-FLOW SEAL

NOTES:

1. FOLLOW SIPLAST SPECIFICATIONS FOR INSTALLATION OF PARAGUARD ROOF DRAIN COMPONENTS.
2. THE MEMBRANE MUST COVER AND EXTEND BEYOND THE FASTENER HEADS.
3. REQUIREMENTS AND RECOMMENDATIONS DETAILED IN THE CURRENT SIPLAST SPECIFICATIONS SHALL APPLY IN ADDITION TO THE ABOVE DRAWING.

Scale: NTS

REF: PARAGUARD COATED DRAIN - PARASOLO - INSULCEL

Detail Number:
DE-6807

14911 Quorum Drive, Suite 600 - Dallas, Texas - 75254
(800) 922-8800

Rev: 06.15.2023



www.siplast.com